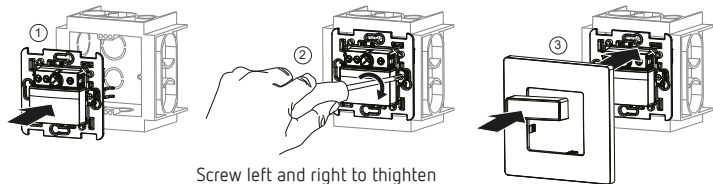


theben

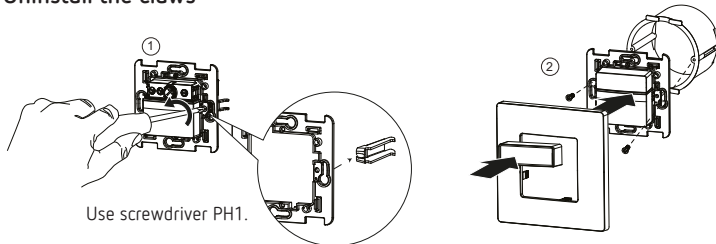
theMura S180-100 UP N WH

2060653



Screw left and right to tighten the claws. Use screwdriver PH1.

Uninstall the claws

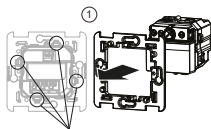


Use screwdriver PH1.

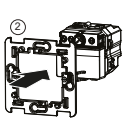
307644
11.12.2023

Cover 45A NI

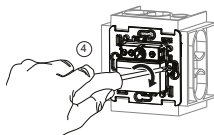
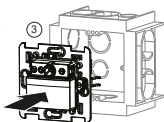
9070804



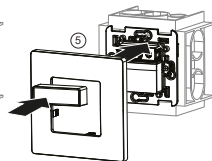
Uninstall existing cover
theMura N frame. Use
screwdriver flat head.



Install cover
theMura N frame
with claws.

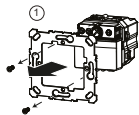


Screw left and right
to tighten the claws.
Use screwdriver PH1.

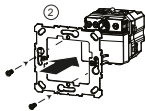


Mounting claws (flush-mounted)

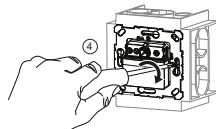
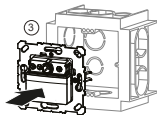
9070127



Uninstall existing
Theben frame. Use
screwdriver flat head.



Install claws for
flush-mounting.



Screw left and right
to tighten the claws.
Use screwdriver PH1.

